



# LARGE-SIZE CEMENT MILL DRIVE



# SEISA Large Vertical Roller Mill Drive

This gear reducer is the most suitable for driving a cement raw mill, a clinker mill and a slag mill. Seisa is one of world's leading companies for a gear reducer of a mill and have supplied more than 300 sets to world's customers which are highly evaluated.

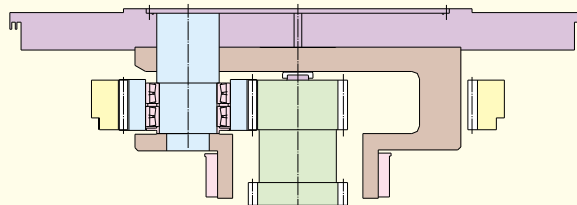
## Features

### 1. High Reliability

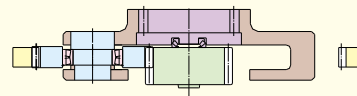
Our vertical roller mill drives are standardized building block design as following block assemblies.

Simple constructions and highest reliability.

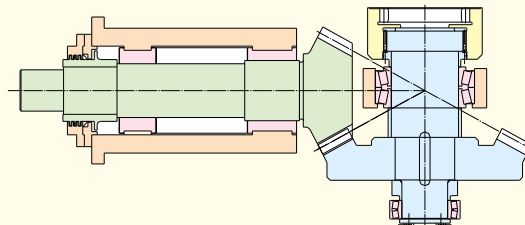
#### a. Output Flange & Main Planetary Gear Parts



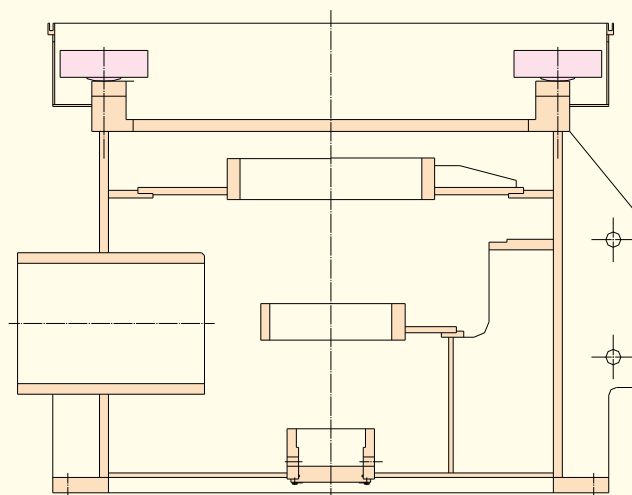
#### b. Intermediate Planetary Parts



#### c. Bevel Gear Parts



#### d. Thrust Bearing & Casing Parts



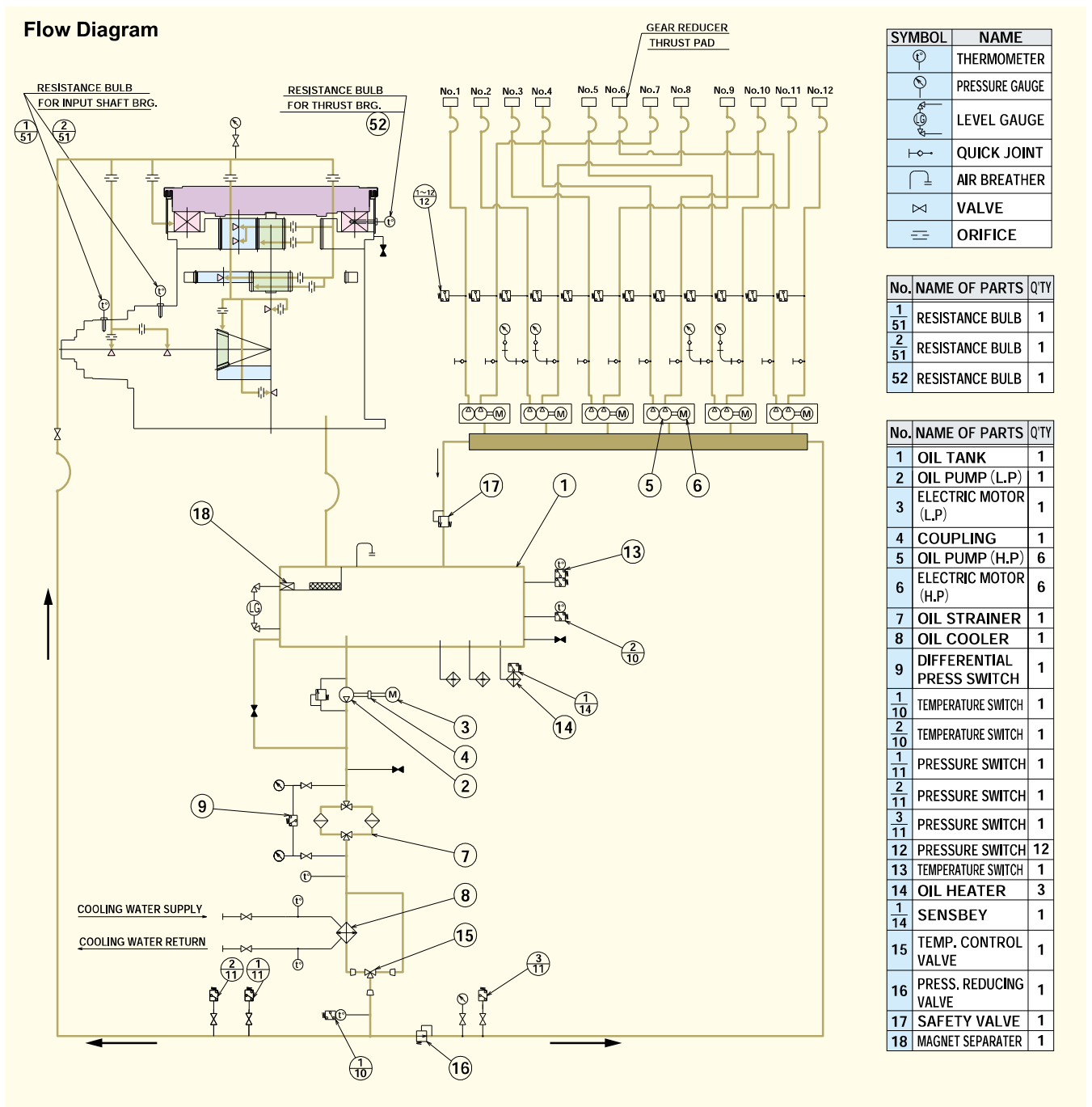
## Features

### 2. Saving Installation Cost

- a. Because of compact size and light weight unit, a completely assembled unit is delivered to an actual site.
- b. Adjustment of gear tooth contact, thrust bearings contacts and oil supply volume of each lubricating portion and flushing works are not required at the actual site, which make possible a short time installation at the site.

### 3. Easy Maintenance

Maintenance is required mainly for check of lubrications



## TYPE BPP & BHP

### Gears

The design of gears is based on AGMA standards and all gears are designed with AGMA service factor **2.5** min.

### Planetary Gearings

The basic tooth form for planetary gearings employed by us has a **25 deg.** pressure angle and 1.1 module addendum. As compared with a tooth form with a pressure angle 20 deg. generally used, this tooth form is **13%** higher in strength and **18%** higher in durability.

### Sun pinion and Planet gears

Sun pinion and planet gears of Cr-Mo or Ni-Cr-Mo forged steel are precisely machined and tooth-grinding finished after carburized and hardened.

### Internal gear

Internal gear made of carbon steel or Cr-Mo forged steel is gear shapering finished or ground after quenched and tempered.

### Spiral Bevel Gears

After carburized and hardened, the gear teeth are carbide tool cut finished by using special cutter blades on Klingelnberg or Gleason spiral bevel gear cutting machine to **JIS Accuracy Class O or 1** (equivalent to AGMA Class 12 or DIN Class 4 ).

### Non-Destructive Check of Gears

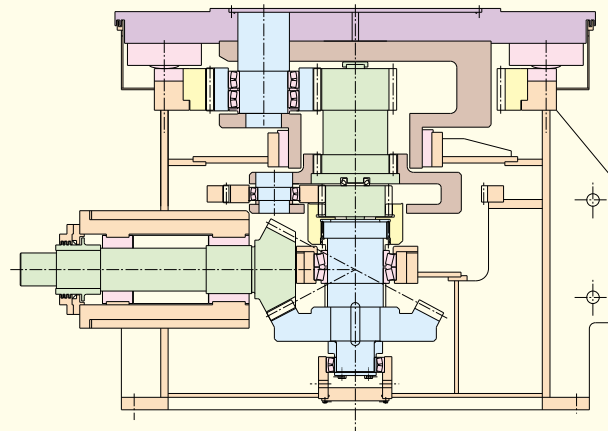
1. Chemical composition and mechanical properties of materials are inspected by the mill sheet of first class steel maker.
2. After heat treatment, a ultrasonic inspection is performed to make sure that there are no internal defects in materials or no defects caused by heat treatment.
3. After tooth-grinding finished, subjected to a magnetic particle inspection is applied to surface-hardened gear teeth to make sure that there are no hair cracks and/or like on the surface.

### Thrust Bearings

Hydro-static thrust bearings for larger size units:

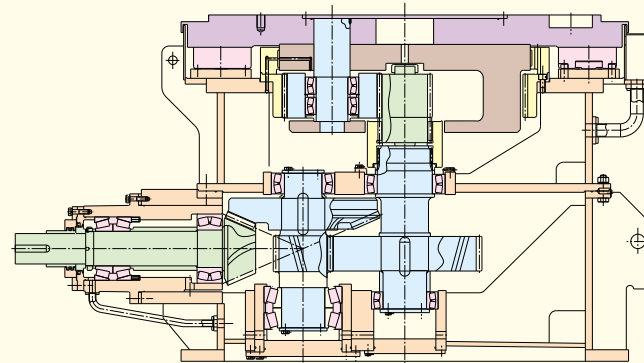
A high pressure oil is fed to each sliding surface of thrust pad and a required oil film thickness is kept by hydro-static pressure. Since the high pressure oil is fed to each thrust pad independently, a certain oil volume is always kept to each pad and a required oil film thickness is always kept under different thrust loads on each thrust pad

### TYPE BPP



The gear reducer for a large size mill consists of triple stage reduction of Bevel/Planetary/Planetary type.

### TYPE BHP



The gear reducer for a medium size mill consists of triple stage reduction of Bevel/Helical/Planetary type.



3800kW Bevel Planetary Gear Reducer for Vertical Type Roller Mill

3300kW Bevel Helical Gear Reducer for Vertical Type Roller Mill



Internal Gear



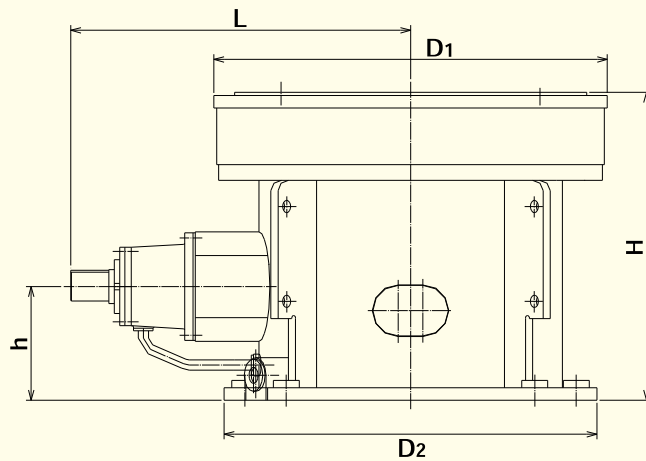
Spiral Bevel Gear



Thrust Pads

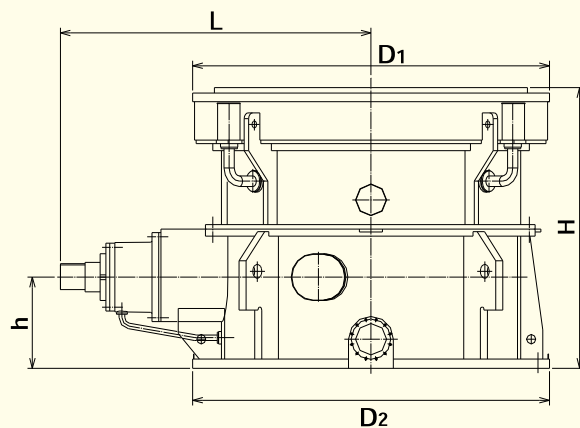
## Selection of Gear Unit & dimension

### For Large Size Mill



TYPE	NOMINAL POWER (kW)	H	D1	L	D2	h	MASS
		mm	mm	mm	mm	mm	
BPP164V	2900	2300	2900	1920	2850	700	47
BPP176V	3300	2450	3000	2000	2950	750	56
BPP190V	3600	2610	3250	2150	3200	800	70
BPP202V	4300	2740	3400	2300	3350	850	81
BPP215V	5000	2850	3550	2500	3500	930	98
BPP230V	5600	3065	3800	2650	3700	1000	120

### For Medium Size Mill



TYPE	NOMINAL POWER (kW)	H	D1	L	D2	h	MASS
		mm	mm	mm	mm	mm	
BHP106V	1200	1815	2200	2080	2300	710	21
BHP115V	1500	1815	2200	2130	2300	710	23
BHP127V	1750	2000	2680	2200	2400	720	33
BHP131V	2000	2220	2700	2400	2550	733	37
BHP133V	2300	2250	2750	2500	2800	760	45
BHP167V	2600	2400	3100	2700	3000	780	51

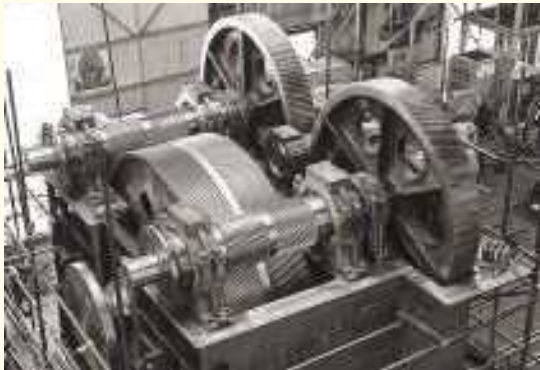
# SEISA Horizontal Mill (Ball Mill) Drive



1500kW Planetary Gear Reducer for Cement Mill



6300kW Planetary Gear Reducer for Cement Mill

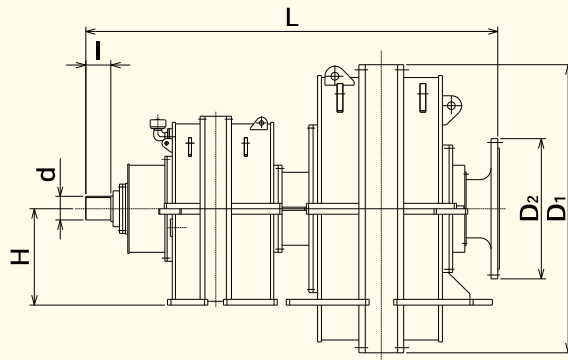
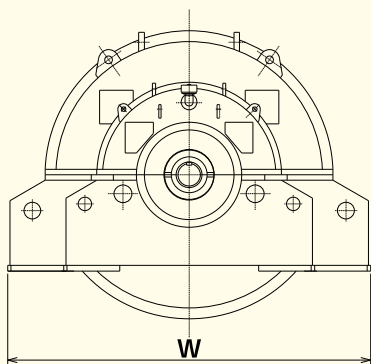


3700kW Symmetry Type Gear Reducer for Cement Mill



Inching Device for Cement Mill

## Selection of Gear Unit & Dimension



TYPE	NOMINAL POWER (kW)	L	W	D <sub>1</sub>	I	D <sub>2</sub>	H	d	MASS ton
		mm	mm	mm	mm	mm	mm	mm	
DPP205H	2900	3700	3000	2440	200	1250	800	190	34.0
DPP218H	3500	3900	3200	2570	224	1400	860	200	40.0
DPP240H	4200	4100	3500	2800	224	1400	950	210	50.0
DPP255H	5400	4200	3800	3000	250	1500	1100	230	65.0

TYPE	NOMINAL POWER (kW)	L	W	D <sub>1</sub>	I	D <sub>2</sub>	H	d	MASS ton
		mm	mm	mm	mm	mm	mm	mm	
DPP285H	6600	4500	4100	3350	280	1550	1150	240	80.0
DPP310H	7700	4750	4300	3610	305	1650	1200	270	95.0
DPP323H	8600	5000	4400	3750	305	1700	1300	280	105.0

## Worldwide Locations

### U.S.A.

**Sumitomo Machinery Corporation of America (SMA)**  
4200 Holland Blvd. Chesapeake, VA 23323, U.S.A.  
TEL: (1) 757-485-3355 FAX: (1) 757-485-7490

### Canada

**SM Cyclo of Canada, Ltd. (SMC)**  
1453 Cornwall Road, Oakville, Canada ON L6J 7T5  
TEL: (1) 905-469-1050 FAX: (1) 905-469-1055

### Mexico

**SM Cyclo de Mexico, S.A. de C.V. (SMME)**  
Av. Desarrollo 541, Col. Finsa, Guadalupe,  
Nuevo León, México, CP67132  
TEL: (52) 81-8144-5130 FAX: (52) 81-8144-5130

### Brazil

**Sumitomo Industrias Pesadas do Brasil Ltda. (SHIB)**  
Rodovia do Acucar (SP-075) Km 26 Itu, Sao Paulo,  
Brasil  
TEL: (55) 11-4886-1000 FAX: (55) 11-4886-1000

### Chile

**SM-Cyclo de Chile Ltda. (SMCH)**  
San Pablo 3507, Quinta Normal, Santiago, Chile  
TEL: (56) 2-892-7000 FAX: (56) 2-892-7001

### Argentina

**SM-Cyclo de Argentina S.A. (SMAR)**  
Ing. Delpini, 2236 Area de Promocion el Triangulo,  
Partido Malvinas Argentinas Grand Bourg,  
Buenos Aires, Argentina B1615KGB  
TEL: (54) 3327-45-4095 FAX: (54) 3327-45-4099

### Guatemala

**SM Cyclo de Guatemala Ensambladora, Ltda. (SMGT)**  
Parque Industrial Unisur, 0 Calle B 19-50 Zona 3,  
Bodega D-1 Delta Bárcenas en Villa Nueva,  
Guatemala  
TEL: (502) 6648-0500 FAX: (502) 6631-9171

### Colombia

**SM Cyclo Colombia, S.A.S. (SMCO)**  
Carrera 11, No.93A-53, Office 203, Bogotá, Colombia  
TEL: (57) 1-3000673

### Germany

**Sumitomo (SHI) Cyclo Drive Germany GmbH (SCG)**  
Cyclostraße 92, 85229 Markt Indersdorf, Germany  
TEL: (49) 8136-66-0 FAX: (49) 8136-5771

### Austria

**Sumitomo (SHI) Cyclo Drive Germany GmbH (SCG)  
SCG Branch Austria Office**  
Gruentalerstraße 30A, 4020 Linz, Austria  
TEL: (43) 732-330958 FAX: (43) 732-331978

### Belgium

**Sumitomo (SHI) Cyclo Drive Germany GmbH (SCG)  
SCG Branch Benelux Office**  
Heikneuterlaan 23, 3010 Kessel-Lo, Leuven, Belgium  
TEL: (32) 16-60-83-11 FAX: (32) 16-60-16-39

### France

**SM-Cyclo France SAS (SMFR)**  
8 Avenue Christian Doppler, 77700 Serris,  
France  
TEL: (33) 164171717 FAX: (33) 164171718

### Italy

**SM-Cyclo Italy Srl (SMIT)**  
Via dell' Artigianato 23, 20010 Cornaredo (MI),  
Italy  
TEL: (39) 293-481101 FAX: (39) 293-481103

### Spain

**SM-Cyclo Iberia, S.L.U. (SMIB)**  
C/Gran Via Nº 63 Bis, Planta 1, Departamento  
1B 48011 Bilbao-Vizcaya, Spain  
TEL: (34) 9448-05389 FAX: (34) 9448-01550

### Sweden

**Sumitomo (SHI) Cyclo Drive Germany GmbH  
Sales Office Nordic BRO (SCG)**  
Dagsverkarvägen 14, 19736 BRO, Sweden  
TEL: (46) 40220031

### United Kingdom

**SM-Cyclo UK Ltd. (SMUK)**  
Unit 29, Bergen Way, Sutton Fields Industrial  
Estate, Kingston upon Hull, HU7 0YQ, East  
Yorkshire, United Kingdom  
TEL: (44) 1482-790340 FAX: (44) 1482-790321

### Turkey

**SM Cyclo Turkey Güç Aktarım Sis. Tic. Ltd.  
Sti. (SMTR)**  
Büyükdere Çayırbaşı Cd. Dede Yusuf Sk. No:  
11, 34453 Sariyer Istanbul, Turkey  
TEL: (90) 216-384-4482 FAX: (90) 216-384-4482

### China

**Sumitomo (SHI) Cyclo Drive China, Ltd. (SCT)**  
11F, SMEG Plaza, No. 1386 Hongqiao Road,  
Changning District, Shanghai, China  
(P.C. 200336)  
TEL: (86) 21-3462-7877 FAX: (86) 21-3462-7922

### Hong Kong

**SM-Cyclo of Hong Kong Co., Ltd. (SMHK)**  
Rm 1301, CEO Tower, 77 Wing Hong Street,  
Cheung Sha Wan, Kowloon, Hong Kong  
TEL: (852) 2460-1881 FAX: (852) 2460-1882

### Korea

**Sumitomo (SHI) Cyclo Drive Korea, Ltd. (SCK)**  
Royal Bldg. 9F Rm. 913, 5 Dangju-Dong,  
Chongno-Ku, Seoul, Korea 03173  
TEL: (82) 2-730-0151 FAX: (82) 2-730-0156

### Taiwan

**Tatung SM-Cyclo Co., Ltd. (TSC)**  
22 Chungshan N. Road 3rd., Sec. Taipei,  
Taiwan 104, R.O.C.  
TEL: (886) 2-2595-7275 FAX: (886) 2-2595-5594

### Singapore

**Sumitomo (SHI) Cyclo Drive Asia Pacific  
Pte. Ltd. (SCA)**  
15 Kwong Min Road, Singapore 628718  
TEL: (65) 6591-7800 FAX: (65) 6863-4238

### Philippines

**Sumitomo (SHI) Cyclo Drive Asia Pacific Pte.  
Ltd. (SCA)  
Philippines Branch Office**  
B2B Granville Industrial Complex, Carmona,  
Cavite 4116, Philippines  
TEL: (63) 2-584-4921 FAX: (63) 2-584-4922

### Vietnam

**SM-Cyclo (Vietnam) Co., Ltd. (SMVN)**  
Factory 2B, Lot K1-2-5, Road No. 2-3-5A,  
Le Minh Xuan Industrial Park, Binh Chanh  
Dist., HCMC, Vietnam  
TEL: (84) 8-3766-3709 FAX: (84) 8-3766-3710

### Malaysia

**SM-Cyclo (Malaysia) Sdn. Bhd. (SMMA)**  
No.7C, Jalan Anggerik Mokara 31/56,  
Kota Kemuning, Seksyen 31, 40460 Shah Alam,  
Selangor Darul Ehsan, Malaysia  
TEL: (60) 3-5121-0455 FAX: (60) 3-5121-0578

### Indonesia

**PT. SM-Cyclo Indonesia (SMID)**  
Jalan Sungkai Blok F 25 No.09K, Delta Silicon III,  
Lippo Cikarang, Bekasi 17530, Indonesia  
TEL: (62) 21-2961-2100 FAX: (62) 21-2961-2211

### Thailand

**SM-Cyclo (Thailand) Co., Ltd. (SMTH)**  
195 Empire Tower, Unit 2103-4, 21st Floor,  
South Sathorn Road, Yannawa, Sathorn,  
Bangkok 10120, Thailand  
TEL: (66) 2670-0998 FAX: (66) 2670-0999

### Australia

**Sumitomo (SHI) Hansen Australia Pty. Ltd.  
(SHAU)**  
181 Power St, Glendenning, NSW 2761,  
Australia  
TEL: (61) 2-9208-3000 FAX: (61) 2-9208-3050

### India

**Sumi-Cyclo Drive India Private Limited (SMIN)**  
Survey No. 130, Hissa No. 02, Jeevan Nagar,  
Off Mumbai-Bangalore Bypass, Tathawade,  
Pune - 411033, India  
TEL: (91) 20-6674-2900 FAX: (91) 20-6674-2901

### Japan

**Sumitomo Heavy Industries, Ltd. (SHI)**  
ThinkPark Tower, 1-1 Osaki 2-chome,  
Shinagawa-ku, Tokyo 141-6025, Japan  
TEL: (81) 3-6737-2511 FAX: (81) 3-6866-5160



## Sumitomo Heavy Industries Gearbox Co., Ltd.

Head Office: 16-1, Wakihama 4-chome, Kaizuka, Osaka, Japan (597-8555)  
Tel: (81)-724-31-3021 Fax: (81)-724-31-0846

International Operations: 16-1, Wakihama 4-chome, Kaizuka, Osaka, Japan (597-8555)  
Tel: (81)-724-39-1151 Fax: (81)-724-37-5170  
<http://www.shigearbox.com>