

 Sumitomo Heavy Industries, Ltd. PTC Group

ThinkPark Tower, 2-1-1 Osaki, Shinagawa-ku, Tokyo 141-6025  
<https://japan.sumitomodrive.com/en-jp>



PTC Group  
Business Profile

# Embracing the future and creating change

We create unique technologies and innovative solutions based on our cultivated technological expertise and global network.

We have the confidence to respond to the expectations of every age and the future.

## Contents

PTC Group Mission	03
History of the PTC Group	05
Products and Services Supporting Society	07
Application Case Studies	09
Gearmotors	09
Gearboxes	10
High Precision Gearboxes	11
Electronic and Control	12
Maintenance Solutions	12
Product Lineup	13
Our Future for People and Community	15
Our Future for the Environment	17
Global Network	19
Americas	19
Europe, Middle East & Africa	21
Asia	23
Asia Pacific	25
Japan Network	27
Company Profile	29
Brand Statement	30



PTC Group Mission

Deliver  
the best possible  
drive solutions  
to build  
a better tomorrow.

Mission Statement

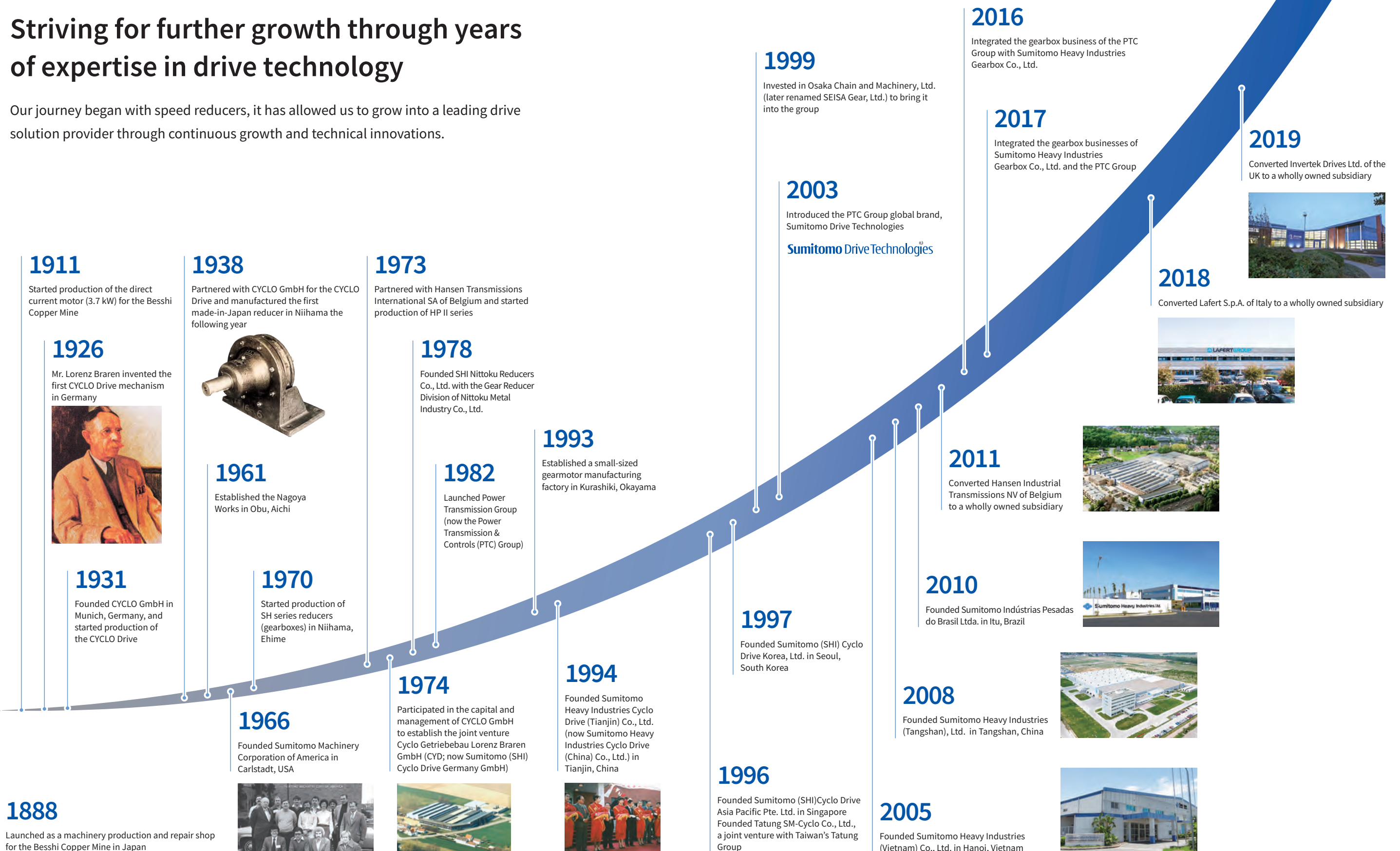
Even though you don't always see us,  
we are always by your side, as a constant driving force.  
We drive society forward, creating connections between people  
and technology, making life better every day.  
We aim to create the maximum impact with every step forward.  
Our mission is for your well being.

We strive to create a better world, sharing our philosophy,  
delivering effective solutions, building on a passion for  
technology and ensuring our planet's future.  
Together, we drive toward a better, more sustainable world.



### Striving for further growth through years of expertise in drive technology

Our journey began with speed reducers, it has allowed us to grow into a leading drive solution provider through continuous growth and technical innovations.

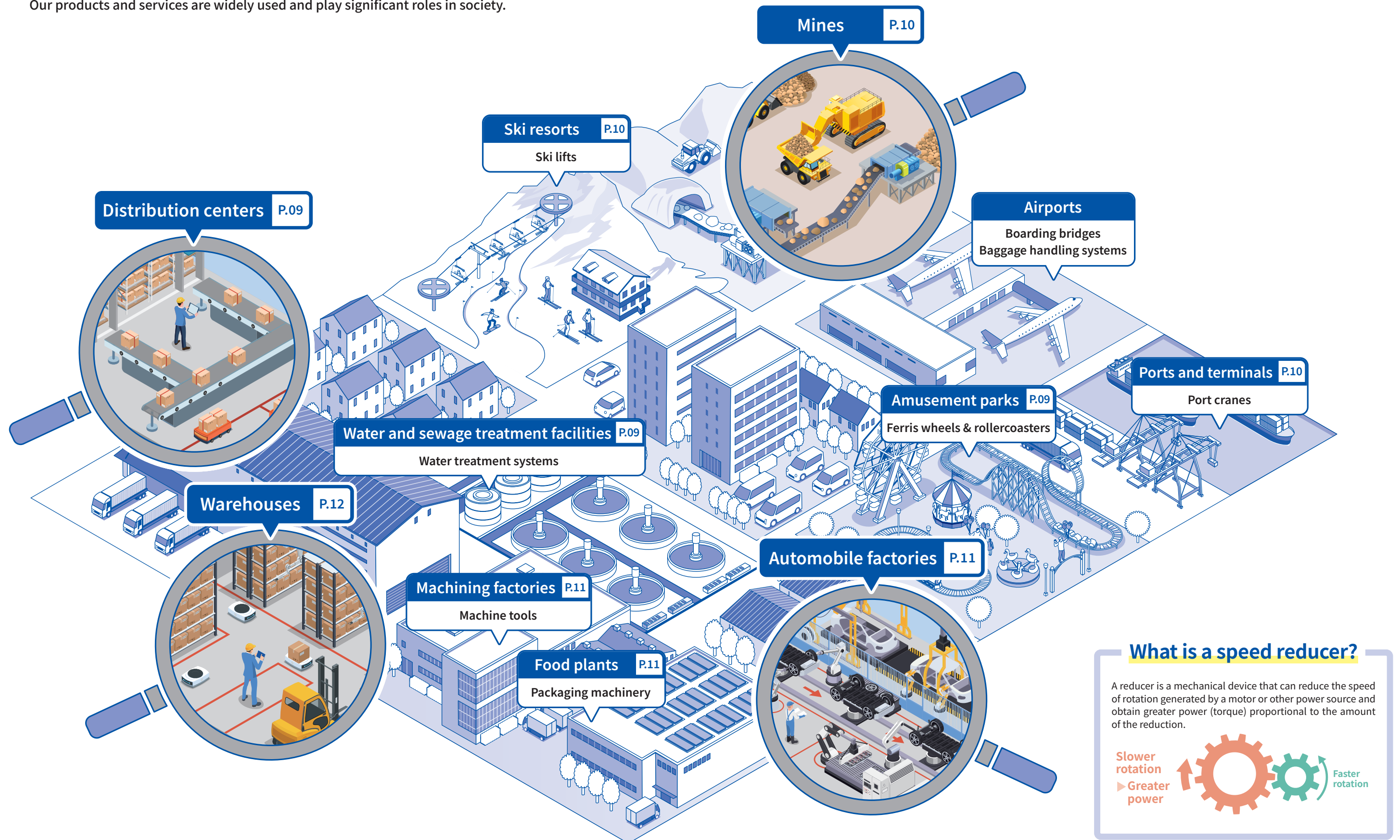




# Products

Products and Services Supporting Society

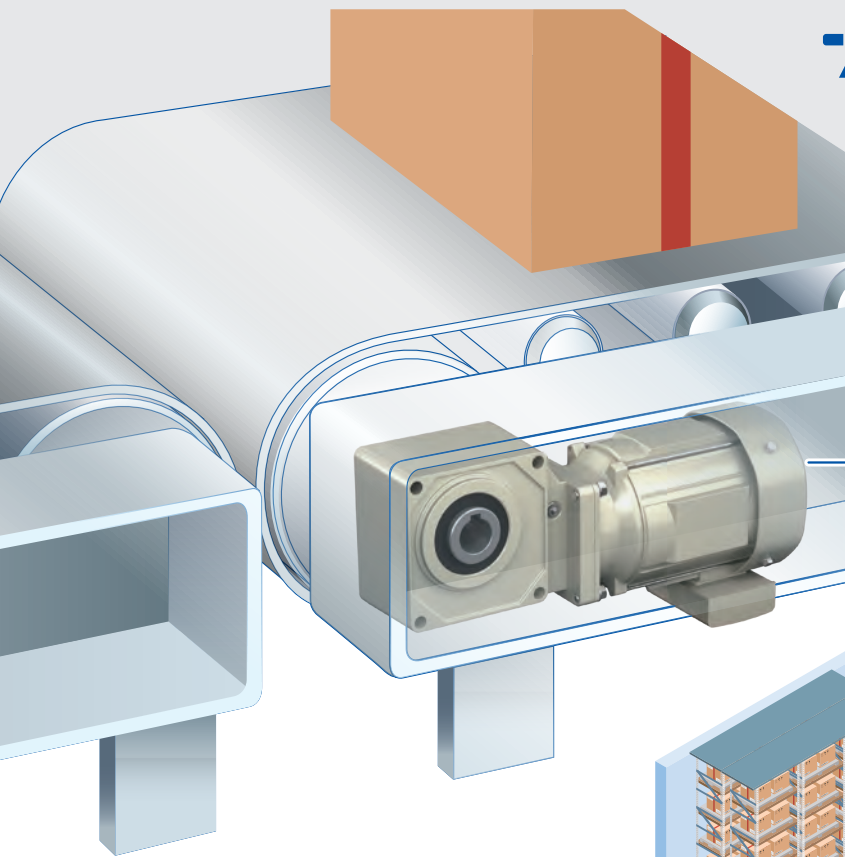
Our products and services are widely used and play significant roles in society.





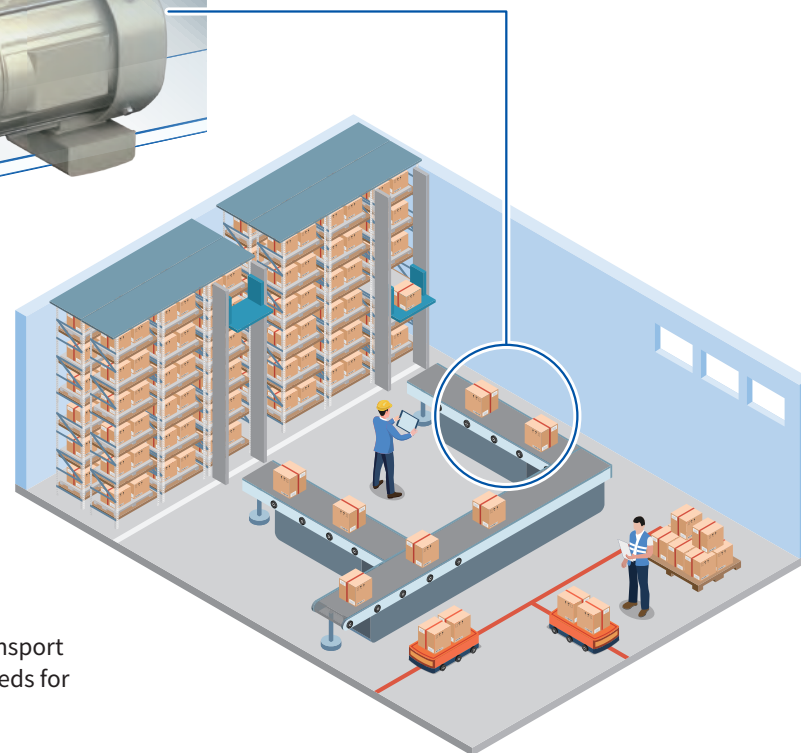
## Gearmotors

Gearmotors combine gears and motors that serve as power sources. They are widely used in many applications throughout society and move objects around us.



### **CASE 1** Distribution centers → Conveyors

HYPONIC Gearmotors move conveyors and transport objects efficiently, thus supporting growing needs for logistic transportation.



### **CASE 2** Water and sewage treatment facilities → Water treatment machinery

Water and sewage treatment facilities, which operate 24 hours a day, 365 days a year, have extensively implemented the highly durable CYCLO Drive units to support our lives.

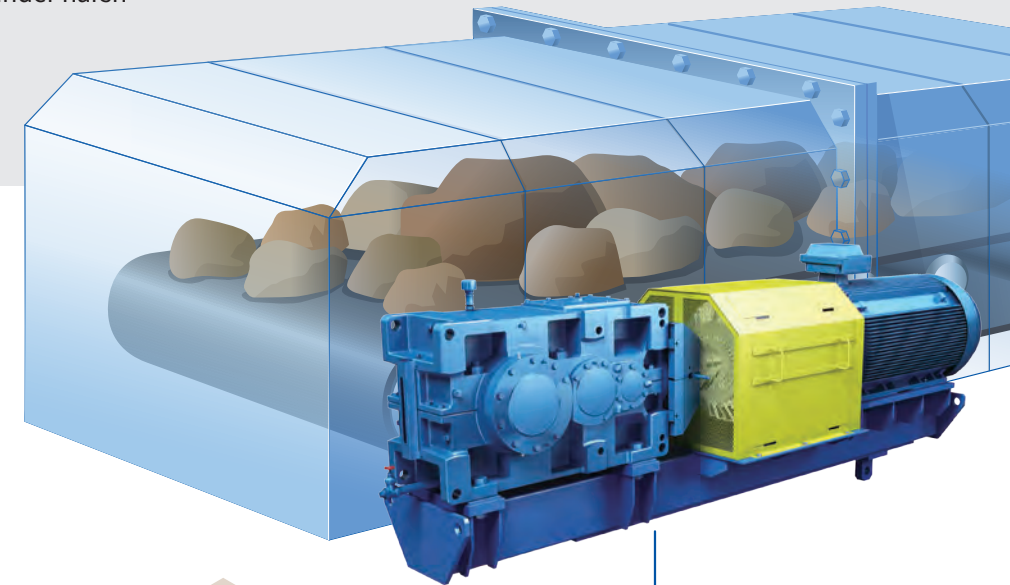


### **CASE 3** Amusement parks → Ferris wheels & rollercoasters

CYCLO Drive units move the rides safely, whether slowly rotating the Ferris wheel or carrying the rollercoaster to its peak at a steady speed.

## Gearboxes

Gearboxes, which are large reducers, move large, heavy items under harsh conditions.



### **CASE 1** Mines → Bulk conveyors

Bulk conveyors, which carry the mined minerals, use PARAMAX. PARAMAX contributes to transporting these minerals, ultimately supporting our lives in many ways.



### **CASE 2** Ports and terminals → Port cranes

PARAMAX uses its great power to move cranes and lift containers to rapidly load and unload onto transport ships.



### **CASE 3** Ski resorts → Ski lifts

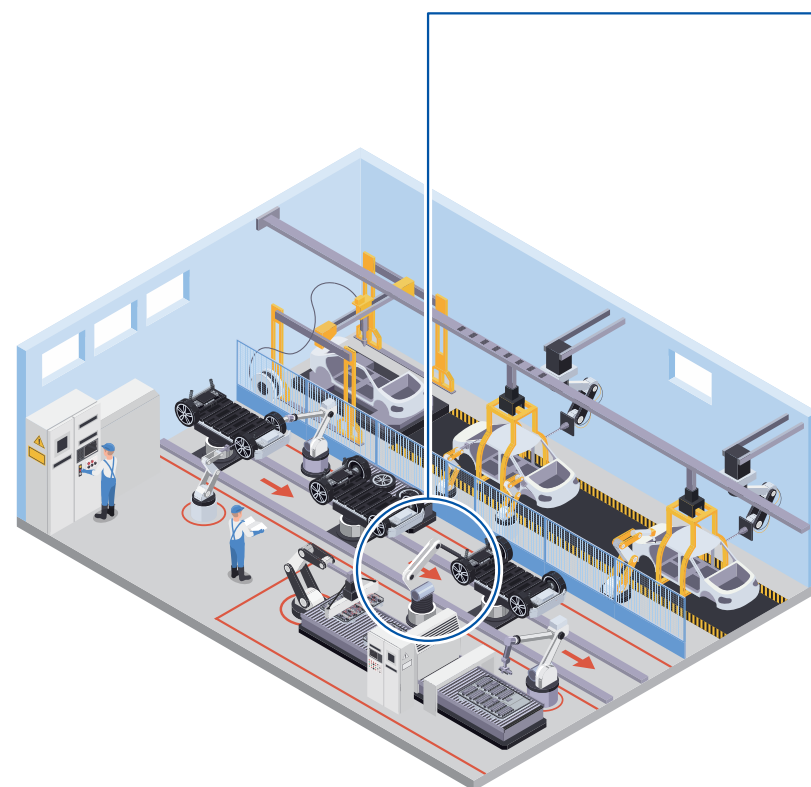
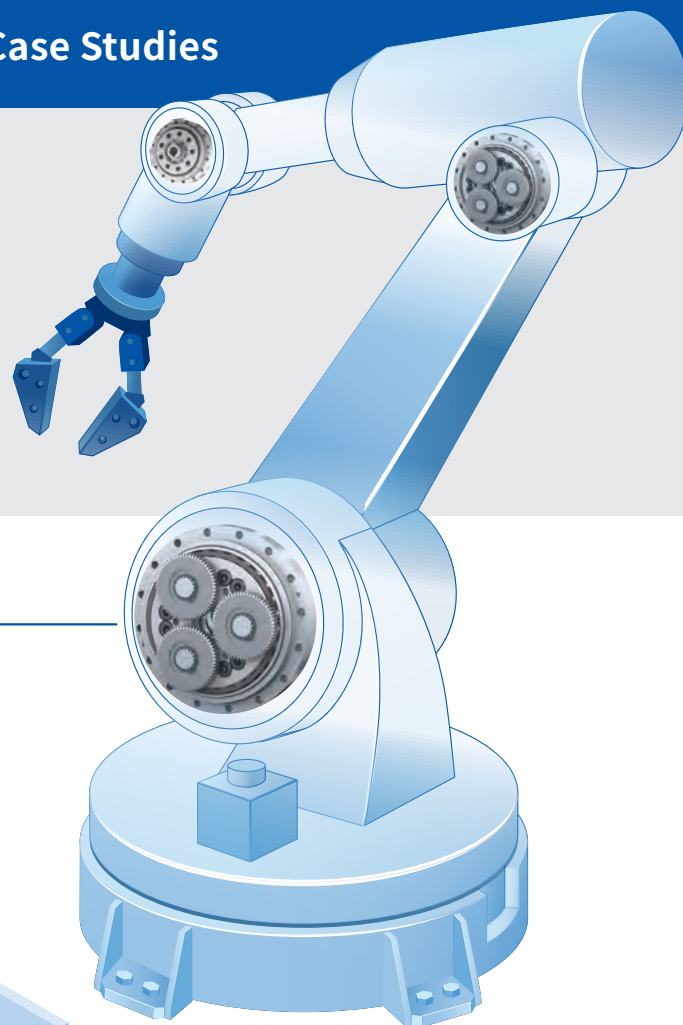
The smooth movement of the lifts in ski resorts is also supported by PARAMAX. It takes on the role of carrying many people safely to the top.





### High Precision Gearboxes

High precision gearboxes are optimally integrated into machinery that requires precise movement. They do great work in the joints of industrial robots and positioning devices in machine tools.

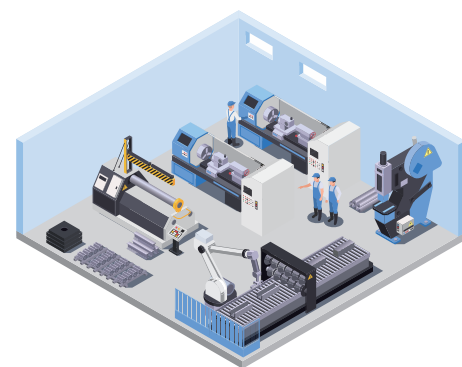


CASE 1

### Automobile factories

→ Industrial robots

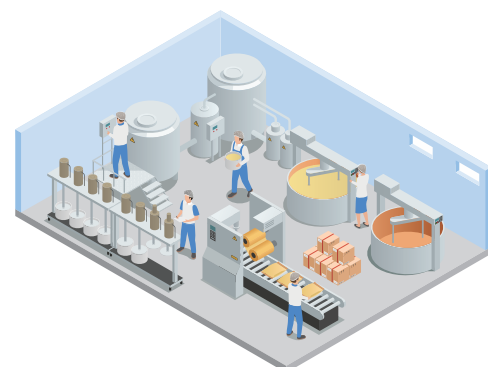
FINE CYCLO High Precision Gearboxes are installed in the joints of industrial robots and do great work in production lines for welding and assembling vehicles, which require advanced technology.



CASE 2

### Machining factories → Machine tools

FINE CYCLO High Precision Gearboxes and IB Series are mounted in machine tools, which require highly precise positioning, to support efficient, high-quality manufacturing.



CASE 3

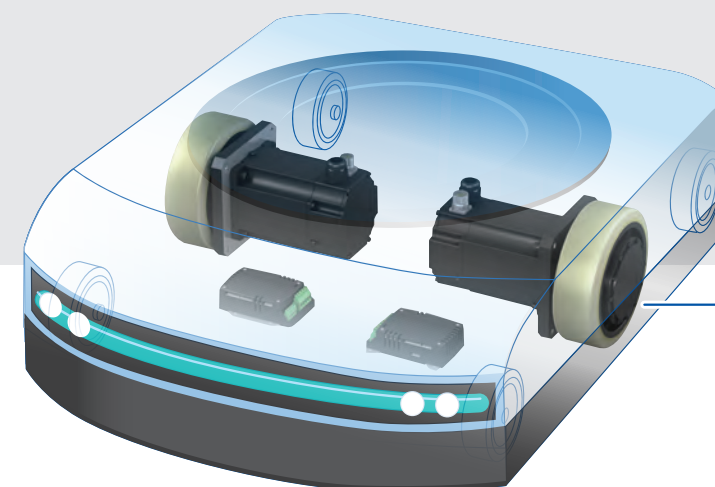
### Food plants → Packaging machinery

Maintaining food safety and hygiene leads to the health and wellbeing of all people. IB Series is installed into food packaging machinery and contribute to the supply of hygienic foodstuffs.



### Electronic and Control

Enabling optimal control of the rotational speed and precise movement of speed reducers for machinery and devices. Exploring new driving solutions in the field of electronic and control products and services, such as AGV/AMR.

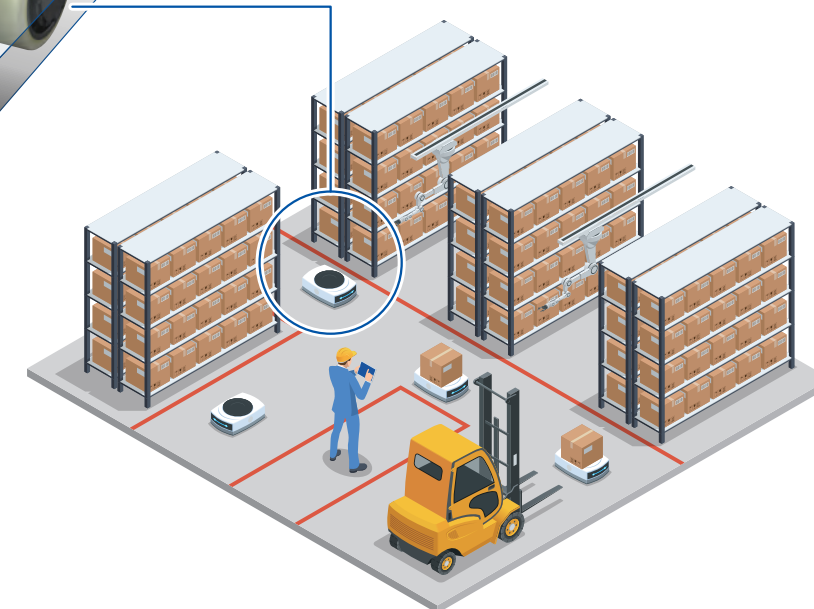


CASE 1

### Warehouses

→ AGV/AMR

AGVs (automated guided vehicles) and AMRs (autonomous mobile robots) support more efficient transport and labor saving. Demand for them extends beyond warehouses to restaurants, hospitals, and welfare facilities as well.



### Maintenance Solutions

Optimal maintenance gives multiple benefits, such as improved productivity, more efficient operations, avoiding downtime and economic losses, and reducing environmental impact, on top of the safe operation of machinery and equipment.

#### Support for repairs and new installations

Quick response making full use of our nationwide service and sales network

#### Proposals of solutions

Proposals for maintenance planning, repairs, and new installations by using our expertise as a speed reducer manufacturer



#### Support for installations of gear reducers

Advice for selection and renewal of speed reducers and proposals of optimal maintenance services

#### Maintenance solutions as a speed reducer manufacturer



#### Maintenance & inspections

Maintenance and inspections through our service centers and certified service shops throughout the country



#### Diagnostics

Abnormality reports, regular reports, and proposals of recommendations by using condition monitoring systems (CMS)

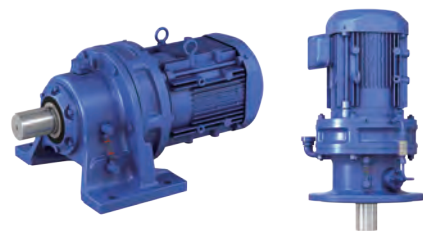






## Gearmotors

P.09



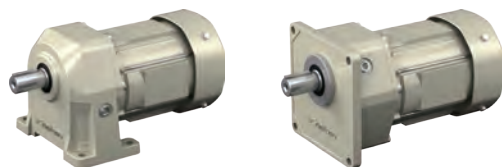
### CYCLO® Drive

Best-selling speed reducer with over 80 proud years of production experience, achieving high strength and reliability through a unique gear mechanism.



### HYPONIC Gearmotor®

Right angle shaft gearmotor with hypoid gears and increasable service factor. Offers a wide range of choices.



### PREST® NEO Gearmotor

Compact design, low noise, and high radial-load, resulting in ease of use.



### BUDDYBOX®

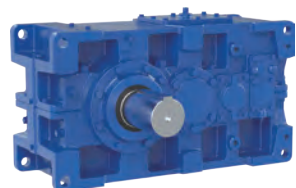
Gearmotor with CYCLO® Drive technology and a rugged gearbox integral in the output stage.



## Gearboxes

\* Gearboxes are manufactured by Sumitomo Heavy Industries Gearbox Co., Ltd.

P.10



### PARAMAX®

Uses high-strength gears with a compact design. High-function, high-performance gearbox. Offers a wide range of options and applications.



### Special Gearboxes

Specialty large gearboxes customized to fit in any application.



### HEDCON® Worm Gear Reducer

Uniquely uses the double-contact theory for a high-performance worm gear reducer with high efficiency and high strength.



### Couplings

Lineup of three types of coupling that can be used for different specifications, with quick lead time.



## High Precision Gearboxes

P.11



### FINE CYCLO® High Precision Gearboxes

High precision gearboxes with zero backlash, compact design, low vibration, durability, high efficiency, and long life.



### E CYCLO® High Precision Gearboxes

Zero backlash, high precision and small gearbox that blends strain wave reduction with trochoid teeth similar to the Cyclo Drive.



### Planetary Gear Reducer for Servo Motors, IB Series, PE type

Best for positioning with low backlash. Available at low cost with quick lead time.



### Planetary Gear Reducers for Servo Motors, IB Series, P1 type

Durability and compact design due to the case with internal gear and a large diameter precision angular ball bearing.



## Electronic and Control

P.12



### Drive Solutions for AGV/AMR smartris®

Three smart components (gear + servo motor + driver) for AGV/AMR in one package.



### Inverters

Inverters optimized for Sumitomo gearmotors. Usable for motors with explosion-proof (d2G4) specifications.



### Autonomous Mobile Robot KeiganALI

An autonomous mobile robot with easy setup and use that support further automation in different scenes.



## Maintenance Solutions

P.12



### Condition Monitoring Systems (CMS)

Detect and visualize failures with vibration sensors. Optimal for predictive maintenance.

See the Product Guide for our full product lineup.



# Moving society and walking together with people toward an exciting future

Now and into the future, our goal is to coexist and thrive alongside communities and society, making positive contributions through our business. We also strive to support safe, secure, happy lifestyles by actively engaging with people.

By assisting human motion and working together, our products support people with physical limitations and achieve wellbeing.



**KeiganALI**

**AMR (Autonomous Mobile Robot)**

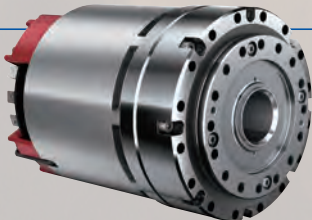
KeiganALI is an autonomous mobile robot (AMR) that offers easy introduction and setup. It supports further automation in a variety of scenes, such as transportation between production lines in factories and warehouses, serving in restaurants, and assisting with light carrying tasks in hospitals. This ultimately contributes to labor saving and improving efficiency.

\* KeiganALI is a product of Keigan Inc. It is sold by the Sumitomo Heavy Industries, Ltd.

**Developing product All-in-one actuator TUAKA®**

**Small industrial robot/cooperative robot/ scalar robot/robotic arm for AGV/AMR**

Driving actuator that provides easy selection of necessary components based on Gearmotor, allowing easier development of robotic joint arms.



Contribute to society through various initiatives, including charity events, that engage our employees and the community.



**Factory tours** **Contributing to our employees and the community**

Our initiatives always focus on the people and community, and also support their development. These activities also lead to an improvement in employee engagement.

**Pink Ribbon Campaign** **Promoting breast cancer screening and supporting early diagnosis and treatment**

Pink speed reducers are symbol of our charity events that promote breast cancer screening and support early diagnosis and treatment.





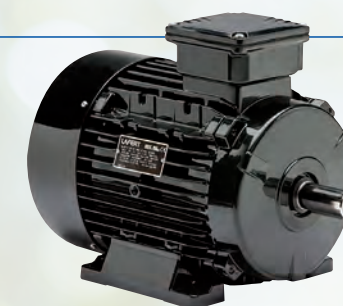
# Delivering eco-friendly products for a greener future for the next generation

With extensive expertise in drive technologies, we are committed to providing the best solutions with years of knowledge.

To leave a greener future for the next generation, we will continue to strive forward with our business.



**Further automation and improved efficiency by controlling our energy consumption. Striving forward with development of products contributing to achieving carbon neutrality by 2050.**



**PM (Permanent Magnet) Motor - IE4/IE5**

## High-efficiency motors

With a highly efficient permanent magnet motor (IE4/IE5) that combines the electrical design of a brushless servo motor and the mechanical design of an induction motor, we contribute to energy conservation and preventing global warming.

\* PM (Permanent Magnet) Motor - IE4/IE5 is a product of Lafert S.p.A.

**OPTIDRIVE P2 Inverter**

## Inverters

Inverters control the rotation of speed reducers to achieve optimal speed, enabling efficient operation. They achieve efficiency and conserves energy, even in applications that require high torque.

\* OPTIDRIVE P2 Inverter is a product of Invertek Drives Ltd.



**Implemented renewable energy sources to achieve energy conservation and fulfill BCP (business continuity planning) strategies in the case of large-scale disasters.**



**PTC Factory 2, Nagoya Works** **Renewable energy**

Solar panels have been installed on the roofs of PTC Factory 2 and the cafeteria "SHIesta" at the Nagoya Works. These installations not only contribute to energy conservation but also enhance our preparedness for BCP in the event of a large-scale disaster.





United States of America

- Manufacturing

Sumitomo Machinery Corporation of America (SMA)

Chesapeake, VA

4200 Holland Blvd. Chesapeake, VA 23323, U.S.A.  
TEL:(1)757-485-3355 FAX:(1)757-485-7490
- Assembly

Sumitomo Machinery Corporation of America (SMA)

Corona, CA

2375 Railroad St. Corona, CA 92878, U.S.A.  
TEL:(1)951-340-4100
- Assembly

Sumitomo Machinery Corporation of America (SMA)

Glendale Heights, IL

175 West Lake Drive, Glendale Heights, IL 60139, U.S.A.  
TEL:(1)630-752-0200
- Manufacturing

Sumitomo Machinery Corporation of America (SMA)|LUFTEX

Lufkin, TX

2612 Hwy 69 North, Lufkin, TX 75904, U.S.A  
TEL:(1)936-632-3679
- Assembly

Sumitomo Machinery Corporation of America (SMA)

Verona, VA

18 Centerview Drive, Verona, VA 24482, U.S.A.  
TEL:(1)540-213-2442 FAX:(1)540-248-0353
- Main sales office

Invertek Drives USA LLC

Libertyville, IL

1226 American Way, Libertyville, IL 60048, U.S.A  
TEL:(1)847-549-3669

Canada

- Assembly

SM Cyclo of Canada, Ltd. (SMC)

Oakville, ON

1453 Cornwall Road, Oakville, ON L6J 7T5, Canada  
TEL:(1)905-469-1050 TEL 24hr:(1)416-565-4264 FAX:(1)905-469-1055
- Assembly

SM Cyclo of Canada, Ltd. (SMC)

Vancouver, BC

19288 36 Avenue, unit 107, Surrey, BC V3S 0L5, Canada  
TEL:(1)604-525-5403 FAX:(1)604-525-0879
- Main sales office

Lafert North America Inc.

Mississauga, ON

5620 Kennedy Road - Mississauga Ontario L4Z 2A9, Canada  
TEL : (1)800-661-6413, (1)905-629 1939

Mexico

- Manufacturing

SM Cyclo de México, S.A. de C.V. (SMME)

Monterrey

Fresnos #201, Pocket Park Oriente, 67258 Juárez, N.L., Mexico  
TEL:(52)81-2188-2154
- Assembly

SM Cyclo de México, S.A. de C.V. (SMME)

Mexico City

Carretera a Lago de Guadalupe Km. 27.5, Bodega A-1, Parque Industrial Tlalnepantla, 54010 Tlalnepantla, Mex., Mexico  
TEL:(52)55-7005-8684
- Assembly

SM Cyclo de México, S.A. de C.V. (SMME)

Guadalajara

Alambiques 975-C, Álamo Industrial, 44769 Guadalajara, Jal., Mexico  
TEL:(52)33-2101-1911
- Assembly

SM Cyclo de México, S.A. de C.V. (SMME)

Querétaro

Lateral Carretera Estatal 431, Km 2+200, Hacienda La Machorra, Parque Tecnológico Innovación Querétaro, 76246 El Marqués, Qro., Mexico  
TEL:(52)44-2670-1690

Manufacturing Assembly Main sales office

Guatemala

- Assembly

SM Cyclo de Guatemala Ensambladora, Ltda. (SMGT)

Guatemala City

Parque Industrial Unisur, 0 Calle B 19-50 Zona 3, Bodega D-1 Delta, Bárcenas, Villa Nueva, Guatemala  
TEL:(502)6648-0500 FAX:(502)6631-9171

Colombia

- Assembly

SM Cyclo Colombia, S.A.S. (SMCO)

Bogotá

Parque Industrial Celta, Km 7.0 Autopista Medellín, Costado Occidental, Funza, CUN, 250027, Colombia  
TEL:(57)1300-0673 FAX:(57)1300-0673 ext.105

Peru

- Main sales office

SM Cyclo de Perú, S.A.C. (SMPE)

Lima

Jr. Monte Rosa 255, Oficina 702, Santiago de Surco - Lima 15038, Peru  
TEL:(51)1-7130342 FAX:(51)1-7150223

Chile

- Assembly

SM-Cyclo de Chile Ltda. (SMCH)

Concepción

Camino a Coronel Km.10 Modulo 3A, San Pedro de la Paz, Biobío, Chile  
TEL:(56)41-246-9806 FAX:(56)41-246-9808
- Assembly

SM-Cyclo de Chile Ltda. (SMCH)

Antofagasta

Camino de La Minería No. 285, Sector La Negra, Antofafasta, Chile  
TEL:(56)55-256-1611 FAX:(56)55-256-1616
- Assembly

SM-Cyclo de Chile Ltda. (SMCH)

Santiago

Camino Lo Echevers 550, Bodegas 5 y 6, Quilicura, Región Metropolitana, Chile  
TEL:(56)2-2892-7000 FAX:(56)2-2892-7001

Brazil

- Manufacturing

Sumitomo Indústrias Pesadas do Brasil Ltda. (SHIB)

São Paulo

Av. Sumitomo, 500 – Itaim Mirim – Itu/SP – CEP: 13312-839 – Brazil  
TEL:(55)11-4403-9292

Argentina

- Assembly

SM-Cyclo de Argentina S.A. (SMAR)

Buenos Aires

Ing Delpini 2230, B1615KGB Malvinas Argentinas, Grand Bourg, Buenos Aires, Argentina  
TEL:(54)3327-45-4095





Germany

- Sumitomo(SHI) Cyclo Drive Germany GmbH (SCG)**

Munich

Cyclostraße 92, 85229 Markt Indersdorf, Germany  
TEL: (49) 8136-660
- 
- Invertek Drives GmbH**

Munich
- Cyclostraße 92, 85229 Markt Indersdorf, Germany  
TEL: (49) 8136-66-1001

**Lafert GmbH**

Stuttgart

Wolf-Hirth-Straße 10 D-71034 Böblingen Germany  
TEL: (49) 175-550-4526

Poland

- 
- Invertek Drives Polska Sp. z o.o.**

Poland
- Ul. Spalska 26/28, 97-200 Tomaszów Mazowiecki, Poland  
TEL: (48) 44-7234-005

Slovenia

- 
- Lafert Elektromotorji D.o.o.**

Šempeter pri Gorici
- Cesta Goriške fronte 46b, 5290 Šempeter pri Gorici, Slovenia  
TEL: (386) 5-393-64-30

Austria

- 
- Sumitomo(SHI) Cyclo Drive Germany GmbH (SCG) Austria Branch Office**

Linz
- Gruentalerstraße 30A, 4020 Linz, Austria  
TEL: (43) 664-2840490

Belgium

- 
- Hansen Industrial Transmissions NV (HIT)**

Edegem
- Leonardo da Vincilaan 1, 2650 Edegem, Belgium  
TEL: (32) 3-450-12-11

France

- 
- SM-Cyclo France SAS (SMFR)**

Paris
- 8 Avenue Christian Doppler, 77700 Serris, France  
TEL: (33) 1-64-17-17-20

**Lafert Moteurs S.A.S.**

Lyon

L'Isle d'Abeau Parc de Chesnes 75, rue de Malacombe F - 38070 St. Quentin-Fallavier France  
TEL: (33) 474-95-41-01

Manufacturing Assembly Main sales office

Italy

- 
- SM-Cyclo Italy Srl (SMIT)**

Milan
- Via dell' Artigianato 23, 20007 Cornaredo MI, Italy  
TEL: (39) 293-481101

**Lafert S.p.A. (LSPA)**

Venice

J.F. Kennedy, 43, 1-30027 San Donà di Piave, Venice, Italy  
TEL: (39) 421-229-611**Lafert S.p.A. (LSPA)**

Venice

Ettore Majorana, 2, I-30020 Noventa di Piave (Venice), Italy  
TEL: (39) 421-572-211**Lafert S.p.A. (LSPA)**

Bologna

E. Mattei, 84/25, I-40138 Bologna, Italy  
TEL: (39) 51-780-294**Lafert S.p.A. (LSPA)**

Ravenna

Santa Barbara, 143, I-48034 Fusignano (Ravenna), Italy  
TEL: (39) 545-950-01

Spain

- 
- Sociedad Industrial de Transmisiones, S.A. (SIT)**

San Sebastián
- Paseo de Ubarburu 67, 20014 San Sebastián Guipúzcoa, Spain  
TEL: (34) 9434-572-00

**Invertek Drives Iberica S.L.U.**

Barcelona

C/ Fondo, 25 Nave 14, P.I.Can Coll -08185 Lliçà de Vall-Barcelona, Spain  
TEL: (34) 9386-345-89**Lafert Motores Electricos, S.L.U.**

Zaragoza

Polígono Pignatelli, Nave 27 E - 50410 Cuarte de Huerva (Zaragoza) Spain  
TEL: (34) 976-503-822

United Kingdom

- 
- SM-Cyclo UK Ltd. (SMUK)**

Hull
- 29 Bergen Way, Hull, HU7 0YQ, United Kingdom  
TEL: (44) 1482-790340

**Invertek Drives Ltd. (IDL)**

Welshpool

Offa's Dyke Business Park, Welshpool, Powys, SY21 8JF, United Kingdom  
TEL: (44) 1938-556868**Lafert Electric Motors Ltd.**

Cheshire

Unit 17 Orion Way Crewe, Cheshire CW1 6NG United Kingdom  
TEL: (44) 1270-270-022

Turkey

- 
- SM-Cyclo Turkey Güç Aktarım Sis. Tic. Ltd. Sti.(SMTR)**

Istanbul
- Barbaros Mh. Çiğdem Sk. Ağaoğlu, Office Mrk. No:1 Kat:4 D.18,34746 Ataşehir/Istanbul, Turkey  
TEL: (90) 216-250-60-69 FAX: (90) 216-250-55-56





Manufacturing
Assembly
Main sales office

China

- Sumitomo (SHI) Cyclo Drive Shanghai, Ltd. (SCS)**

Songjiang, Shanghai

2#, 301 ShuYa Road, Songjiang District, Shanghai, China 201611

TEL : (86)21-5774-8866 FAX : (86)21-5774-8510
- Sumitomo (SHI) Cyclo Drive Shanghai, Ltd. (SCS)**

Changning, Shanghai

Room 1101, SMEG Plaza Office Building, No.1386 Hongqiao Road, Changning District, Shanghai, China 200336

TEL : (86)21-3462-7877 FAX : (86)21-3462-7922
- Sumitomo (SHI) Cyclo Drive Shanghai, Ltd. (SCS)**

Tianhe Guangzhou

Room 2006, Building B, Zhongtai International, No. 161, Linhe West Road, Tianhe District, Guangzhou, China 511356

TEL : (86)20-3828-8465
- Sumitomo (SHI) Cyclo Drive Shanghai, Ltd. (SCS)**

Huadu Guangzhou

No.1 Workshop, No. 333, Juhuashi Avenue, Huadu District, Guangzhou,China 510870

TEL : (86)20-8298-1075 FAX : (86)20-3222-1017
- Sumitomo (SHI) Cyclo Drive Shanghai, Ltd. (SCS)**

Beijing

Room 1408, Jingliang Building, No. 16, E. 3rd Ring Road Middle, Chaoyang District, Beijing, China 100022

TEL : (86)10-8485-4688 FAX : (86)10-8485-4698
- Sumitomo (SHI) Cyclo Drive Shanghai, Ltd. (SCS)**

Nanjing

Room A2A4, 16/F, Shangmao Century Plaza, No. 49, Zhongshan South Road, Qinhuai District, Nanjing, China 210005

TEL : (86)25-8689-0102 FAX : (86)25-8689-0121
- Sumitomo (SHI) Cyclo Drive Shanghai, Ltd. (SCS)**

Wuhan

Room 1104A, Yuexiu Fortune Center, No. 1, Qiaokou Road Zhongshan Avenue, Qiaokou District, Wuhan, China 430022

TEL : (86)27-8571-0230
- Sumitomo (SHI) Cyclo Drive Shanghai, Ltd. (SCS)**

Xi'an

Room 702, Building A, Gaoke Plaza, No. 1, Gaoxin 4th Road, Yanta District, Xi'an, China 710075

TEL : (86)29-8836-5200 FAX : (86)29-8836-5202
- Sumitomo (SHI) Cyclo Drive China, Ltd. (SCT)**

Tianjin

No. 7 Sanjing Road, Dongli Economic Development Zone, Tianjin, China 300300

TEL : (86) 22-2499-3501 FAX : (86)22-2499-3507
- Sumitomo Heavy Industries (Tangshan), Ltd. (SHTS)**

Tangshan

No.35, Yuanqu Road, Modern Equipment Manufacturing Industrial Zone, Kaiping District, Tangshan, China 063021

TEL : (86) 315-339-0880 FAX : (86)315-339-0939
- Invertek Drives (Shenyang) Ltd.**

Shenyang

Building 11, No. 99A Chuangxin 1st Road , Hunnan New District, Shenyang, China 110169

TEL : (86) 24-2378-6568 FAX : (86) 4008-266163-69955
- Lafert (Suzhou) Co.,Ltd.**

Suzhou

No.3 Workshop, No. 2011, Tianedang Road, Wuzhong District, Suzhou, China 215104

TEL : (86) 512-6687-0618 FAX : (86) 512-6687-0718

Hong Kong

- SM- Cyclo of Hong Kong Co., Ltd. (SMHK)**

Hong Kong

Unit 19, 28/F, Metropole Square, 2 On Yiu Street, Sha Tin, New Territories, Hong Kong, China

TEL : (86) 852-2460-1881 FAX : (86)852-2460-1882

Taiwan

- Tatung SM-CYCLO Co., Ltd.**

Taipei

22, Chungshan N. Rd., 3rd Sec. Taipei, Taiwan, 104, R.O.C.

TEL : (886)2-2595-7275 FAX : (886)2-2595-5594
- Tatung SM-CYCLO Co., Ltd.**

New Taipei City

352 Shi-Tong Road., San-Xia Dist. , New Taipei City, Taiwan, 237 , R.O.C.

TEL : (886)2-8676-1382 FAX : (886)2-8676-2285

South Korea

- Sumitomo (SHI) Cyclo Drive Korea, Ltd. (SCK)**

Seoul

913, 19 Saemunan-ro 5-gil, Jongno-gu, Seoul, Republic of Korea 03173

TEL : (82)2-730-0151 FAX : (82)2-730-0156
- Sumitomo (SHI) Cyclo Drive Korea, Ltd. (SCK)**

Incheon

113 Cheongneung-daero 410beon-gil, Namdong-gu, Incheon, Republic of Korea 21691

TEL : (82)32-819-8915 FAX : (82)32-819-2484
- Sumitomo (SHI) Cyclo Drive Korea, Ltd. (SCK)**

Busan

302-1, 37 Gwaegam-ro, Sasang-gu, Busan, Republic of Korea 46977

TEL : (82) 51-319-1547 FAX : (82) 51-319-1587



Manufacturing Assembly Main sales office

India

Sumi-Cyclo Drive India Private Limited (SDI) Pune  
Gat No. 186, Global Raisoni Industrial Park  
Alandi Markal Road, Fulgaon, Pune 411 033, India  
TEL : (91)96077-45353

Singapore

Sumitomo (SHI) Cyclo Drive Asia Pacific Pte. Ltd. (SCA) Singapore  
83 Joo Koon Circle Singapore 629109  
TEL : (65)6591-7800 FAX : (65)6863-4238

Invertek Drives Far East Pte Ltd. Singapore  
13 Buroh Street, Jurong, Singapore, 627551  
TEL : (65)6570-0880

Lafert Singapore Pte Ltd. Singapore  
48 Hillview Terrace #06-06 Hillview Building - Singapore 669269  
TEL : (65)6763-0400, (65)6762-0400

Philippines

Sumitomo (SHI) Cyclo Drive Asia Pacific Pte. Ltd. Philippines Branch Office (SMPH) Manila  
C4 & C5 Buildings Granville Industrial Complex, Governor's Drive, Bo. Bancal, Carmona, 4116 Cavite, Philippines  
TEL : (63)2-8584-4921 TEL 24hr : (63)917-525-5069 FAX : (63)2-8584-4922

Sumitomo (SHI) Cyclo Drive Asia Pacific Pte. Ltd. Philippines Branch Office (SMPH) Cebu  
Veloso Building, San Isidro Road, Talisay City, 6045 Cebu, Philippines  
TEL : (63)917-522-5037 TEL 24hr : (63)917-838-1378 FAX : (63)32-505-6217

Vietnam

SM-Cyclo (Vietnam) Co., Ltd (SMVN) Ho Chi Minh  
Factory 2B, Lot K1-2-5, Road No. 2-3-5A, Le Minh Xuan Industrial Park, Binh Chanh Dist., Ho Chi Minh, Ho Chi Minh City, Vietnam  
TEL : (84)28-3766-3709 FAX : (84)28-3766-3710

SM-Cyclo (Vietnam) Co., Ltd (SMVN) Hanoi  
Room 603, NOZA Building, 243 Cau Giay Street, Cau Giay District, Hanoi, Hanoi City, Vietnam  
TEL: (84)24-3767-2716 FAX: (84)24-3767-2470

Sumitomo Heavy Industries (Vietnam) Co., Ltd. (SHIV) Hanoi  
Plot I-7, Thang Long Industrial Park, Dong Anh District, Hanoi City, Vietnam  
TEL: (84)4-3955-0004 FAX: (84)4-3955-0014

Indonesia

PT. SM Cyclo Indonesia (SMID) Cikarang  
Cikarang Jalan Sungkai Blok F 25 No. 09K, Delta Silicon III, Lippo Cikarang, Bekasi, Jawa Barat, Indonesia  
TEL : (62)21-29612100 FAX : (62)21-29612211

PT. SM Cyclo Indonesia (SMID) Medan  
Jalan Pasti Barat No 3, Kelurahan Binjai, Kecamatan Medan Denai, Medan, North Sumatra 20228, Indonesia  
TEL : (62)811-1975-973

PT. SM Cyclo Indonesia (SMID) Sampit  
Jalan HM. Arsad No.10 Km 3, Sampit, Central Kalimantan Indonesia  
TEL : (62)822-5224-9988

Malaysia

SM-Cyclo (Malaysia) Sdn. Bhd. (SMMA) Shah Alam  
No.7C, Jalan Anggerik Mokara 31/56, Kota Kemuning, Seksyen 31, 40460 Shah Alam, Selangor, Malaysia  
TEL : (60)3-5121-0455 FAX : (60)3-5121-0578

SM-Cyclo (Malaysia) Sdn. Bhd. (SMMA) Johor Bahru  
24-02, Jalan Ros Merah 2/17, Taman Johor Jaya, 81100 Johor Bahru, Johor, Malaysia  
TEL : (60)19-238-6106 FAX : (60)7-357-2909

SM-Cyclo (Malaysia) Sdn. Bhd. (SMMA) Sabah  
GRD FR & 1ST FR,BLK B,LOT 8, MILE 7 1/2, LABUK ROAD, PPM 582, ELOPURA, 90000 SANDAKAN,SABAH., Sabah, Malaysia  
TEL : (60)19-380-2909

SM-Cyclo (Malaysia) Sdn. Bhd. (SMMA) Sarawak  
Sarawak (Kuching station), 93350 Sarawak, Malaysia  
TEL: (60) 19-335 0455

SM-Cyclo (Malaysia) Sdn. Bhd. (SMMA) Penang  
No. 2945, First Floor, Jalan Prai, Taman Inderawasih 13600 Prai, Pulau Pinang, Malaysia  
TEL : (60) 19-650 2909

Thailand

SM-Cyclo (Thailand) Co., Ltd. (SMTH) Chonburi  
700/542 Moo 6, Amata City Chonburi Industrial Estate, Tambol Donhauroh, Muang, Chon Buri 20000, Thailand  
TEL : (66)38-454-230 FAX : (66)38-454-235

SM-Cyclo (Thailand) Co., Ltd. (SMTH) Bangkok  
1 Empire Tower, 21st Floor Unit 2103-4, South Sathorn Road, Yan Nawa, Bangkok 10120, Thailand  
TEL : (66)2-670-0998 FAX : (66)2-670-0999

SM-Cyclo (Thailand) Co., Ltd. (SMTH) Khon Kaen  
936/5 Moo.14 Tambol Sila, Amphur Muang, Khon Kaen 40000, Thailand  
TEL : (66)89-969-9807

SM-Cyclo (Thailand) Co., Ltd. (SMTH) Lampang  
Kluaymai@Klangmuang Village, 8/27 Highway-Lampang-Ngaw, Tambol Chompoo, Amphur Muang, Lampang 52100, Thailand  
TEL : (66)81-812-5669

SM-Cyclo (Thailand) Co., Ltd. (SMTH) Nakhon Ratchasima  
418/67 Wanasiri Village 2, Moo. 6 Ban Pho Subdistrict, Mueang District, Nakhon Ratchasima 30310, Thailand  
TEL : (66)44-265-846

SM-Cyclo (Thailand) Co., Ltd. (SMTH) Songkhla  
1/8 Soi 2 Palmspring Village 7, Moo.1 Chaichanasongkram Road, Tambol Kuanlang, Amphur Hatyai, Songkhla 90110, Thailand  
TEL : (66)81-810-5387

SM-Cyclo (Thailand) Co., Ltd. (SMTH) Surat Thani  
120/4 Moo.1 Tambol Bangkung, Amphur Muang, Surat Thani 84000, Thailand  
TEL : (66)77-295-615

Australia

Sumitomo (SHI) Hansen Australia Pty. Ltd. (SHAU) Sydney  
181 Power Street Glendenning, NSW 2761, Australia  
TEL : (61)1300-037-483

Sumitomo (SHI) Hansen Australia Pty. Ltd. (SHAU) Perth  
Unit 1/23 Mordaunt Circuit, Canning Vale, WA 6155, Australia  
TEL : (61)1300-037-483

Sumitomo (SHI) Hansen Australia Pty. Ltd. (SHAU) Melbourne  
Suite 18, 20-22 Hardner Road, Mount Waverley VIC 3149, Australia  
TEL : (61)1300-037-483

Sumitomo (SHI) Hansen Australia Pty. Ltd. (SHAU) Mackay  
9-13 Turbo Drive, Paget QLD 4740, Australia  
TEL : (61)1300-037-483



Sumitomo Heavy Industries, Ltd. PTC Group

01 Headquarters

ThinkPark Tower, 2-1-1 Osaki, Shinagawa-ku, Tokyo 141-6025

02 Nagoya Factory

6-1 Asahi-cho Obu-shi, Aichi 474-8501

Sumitomo Heavy Industries Gearbox Co., Ltd.

03 Headquarter & Kaizuka Factory

4-16-1 Wakiham Kaizuka-shi, Osaka 597-8555

04 Okayama Factory

8230 Otoshima-Tamashima Kurashiki-shi, Okayama 713-8501

Sales Offices (Sumitomo Heavy Industries, Ltd. PTC Group)

05 Hokkaido

16-1-38, Kita 47 Jo Higashi, Higashi-ku Sapporo-shi, Hokkaido 007-0847  
Tel: +81 11-781-9802 Fax: +81 11-781-9807

06 Sendai

OX Basho No Tsuji Building, 3-3-16 Ichibancho, Aoba-ku Sendai-shi, Miyagi 980-0811  
Tel: +81 22-264-1242 Fax: +81 22-224-7651

07 Kita-kanto

Kanezuka Building, 4-242 Sakuragicho, Omiya-ku Saitama-shi, Saitama 330-0854  
Tel: +81 48-650-4700 Fax: +81 48-650-4615

08 Chiba

Hosokawa Building, 1-15-1 Benten, Chuo-ku Chiba-shi, Chiba 260-0045  
Tel: +81 43-206-7730 Fax: +81 43-206-7731

01 Tokyo

ThinkPark Tower, 2-1-1 Osaki, Shinagawa-ku, Tokyo 141-6025  
Tel: +81 3-6737-2520 Fax: +81 3-6866-5171

09 Yokohama

Minamisaiwai Orime Building, 2-19-4, Minamisaiwai, Nishi-ku Yokohama-shi, Kanagawa 220-0005  
Tel: +81 45-290-6893 Fax: +81 45-290-6885

10 Nagano

Mori Building, 166 Okada-machi Nagano-shi, Nagano 380-0936  
Tel: +81 26-226-9050 Fax: +81 26-226-9045

11 Toyama

327-1 Kami Fukuro Toyama-shi, Toyama 939-8071  
Tel: +81 76-491-5660 Fax: +81 76-491-5604

12 Kanazawa

WAKITA Kanazawa Building, 4-55 Minami-cho Kanazawa-shi, Ishikawa 920-0919  
Tel: +81 76-261-3551 Fax: +81 76-261-3561

13 Shizuoka

T.K Building, 3-2-25, Mabuchi, Suruga-ku Shizuoka-shi, Shizuoka 422-8063  
Tel: +81 54-654-3123 Fax: +81 54-654-3124

14 Chubu

Nagoya Itochu Building, 1-5-11 Nishiki, Naka-ku Nagoya-shi, Aichi 460-0003  
Tel: +81 52-218-2980 Fax: +81 52-218-2981

15 Yokkaichi

4-17-20, Shinsho Yokkaichi-shi, Mie 510-0064  
Tel: +81 59-353-7467 Fax: +81 59-354-1320

16 Shiga

334 Matsuo, Hino-cho Gamo-gun, Shiga 529-1601  
Tel: +81 748-53-8900 Fax: +81 748-53-3510

17 Kyoto

Kyoto Oike Daiichi Seimei Building, 435 Sasaya-cho, Oikedori higashinotoin nishiiru, Nakagyo-ku Kyoto-shi, Kyoto 604-8187  
Tel: +81 75-231-2515 Fax: +81 75-231-2615

18 Osaka

Osaka Mitsui Bussan Building, 2-3-33 Nakanoshima, Kita-ku Osaka-shi, Osaka 530-0005  
Tel: +81 6-7635-3663 Fax: +81 6-7711-5119

19 Kobe

Kobe Harborland Center Building, 1-3-3, Higashi Kawasaki-cho, Chuo-ku Kobe-shi, Hyogo 650-0044  
Tel: +81 78-366-6610 Fax: +81 78-366-6625

20 Okayama

854-10 Kurisaka Kurashiki-shi, Okayama 701-0113  
Tel: +81 86-463-5678 Fax: +81 86-463-5608

21 Hiroshima

Hiroshima Inarimachi NK Building, 4-1 Inari-machi, Minami-ku Hiroshima-shi, Hiroshima 732-0827  
Tel: +81 82-568-2521 Fax: +81 82-262-5544

22 Shikoku

SES Building, 3-4-23, Shinden-cho Niihama-shi, Ehime 792-0003  
Tel: +81 897-32-7137 Fax: +81 897-34-1303

23 Kitakyushu

KMM Building, 2-14-1, Asano, Kokurakita-ku Kitakyushu-shi, Fukuoka 802-0001  
Tel: +81 93-531-7760 Fax: +81 93-531-7778

24 Fukuoka

Hakata Fukoku Seimei Building, 8-30 Tenya Machi, Hakata-ku Fukuoka-shi, Fukuoka 812-0025  
Tel: +81 92-283-3277 Fax: +81 92-283-3177

Sales Offices (Sumitomo Heavy Industries Gearbox Co., Ltd.)

01 East Japan

ThinkPark Tower, 2-1-1 Osaki, Shinagawa-ku, Tokyo 141-6025  
Tel: +81 3-6737-2650 Fax: +81 3-6866-5178

18 West Japan

Osaka Mitsui Bussan Building, 2-3-33 Nakanoshima, Kita-ku Osaka-shi, Osaka 530-0005  
Tel: +81 6-7635-3660 Fax: +81 6-7711-5121

21 Hiroshima

Hiroshima Inarimachi NK Building, 4-1 Inari-machi, Minami-ku Hiroshima-shi, Hiroshima 732-0827  
Tel: +81 82-568-0101 Fax: +81 82-262-3767

Repair & Maintenance Inquiries  
Service Centers

\*Japanese only

05 Hokkaido

16-1-38, Kita 47 Jo Higashi, Higashi-ku Sapporo-shi, Hokkaido 007-0847  
Tel: +81 11-781-9803 Fax: +81 11-781-9807

25 Tokyo

5-9-13, Bijogi Toda-shi, Saitama 335-0031  
Tel: +81 48-449-4755 Fax: +81 48-449-4785 (Gearmotors)  
Tel: +81 48-449-4766 Fax: +81 48-449-4786 (Gearboxes)

11 Hokuriku

327-1 Kami Fukuro Toyama-shi, Toyama 939-8071  
Tel: +81 76-491-5660 Fax: +81 76-491-5604

26 Nagoya

2-97-1 Daitocho Obu-shi, Aichi 474-0023 (Service Technical Center)  
Tel: +81 562-45-6402 Fax: +81 562-44-1998

27 Osaka

2-1-20, Yokoe Ibaraki-shi, Osaka 567-0865  
Tel: +81 72-637-3901 Fax: +81 72-637-5774

20 Okayama

854-10 Kurisaka Kurashiki-shi, Okayama 701-0113  
Tel: +81 86-464-3681 Fax: +81 86-464-3682 (Gearmotors)  
8230 Otoshima-Tamashima Kurashiki, Okayama 713-8501  
Tel: +81 86-525-6229 Fax: +81 86-525-6358 (Gearboxes)

24 Fukuoka

Hakata Fukoku Seimei Building, 8-30 Tenya Machi, Hakata-ku Fukuoka-shi, Fukuoka 812-0025  
Tel: +81 92-431-2678 Fax: +81 92-431-2694

Technical Support  
Customer Service in Japan

\*Japanese only

Business hours

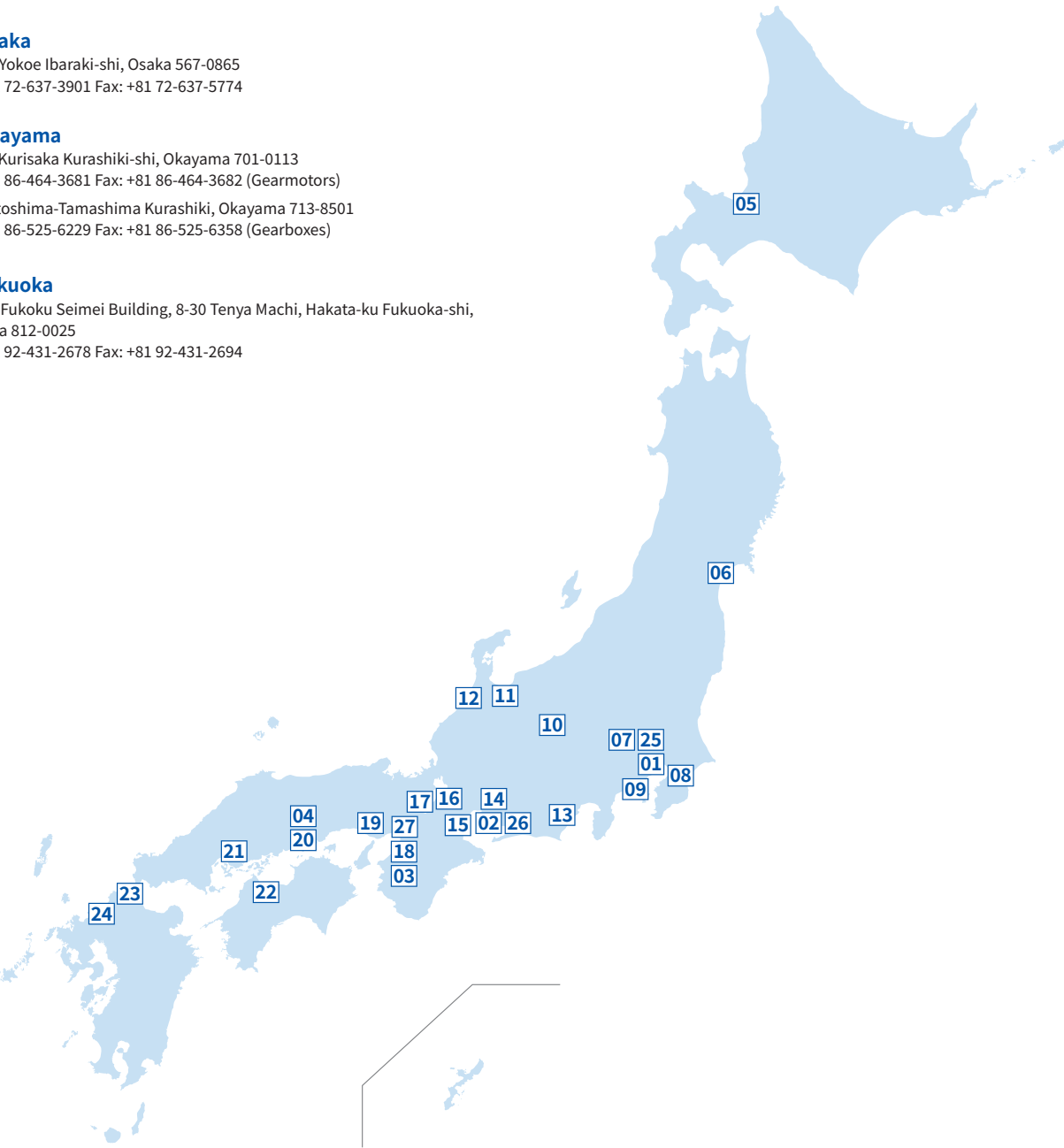
JST 9:00–11:45, 13:00–16:45, Monday–Friday  
(excluding public holidays and company holidays)

Toll-free: 0120-42-3196

From mobile phones: +81 570-03-3196 Fax: +81 562-48-5183



<https://www.sumitomodrive.com>



# Company Profile

## Head Office

**Company Name:** Sumitomo Heavy Industries, Ltd.  
**Founded:** November 20, 1888  
**Incorporated:** November 1, 1934  
**Address:** ThinkPark Tower, 2-1-1 Osaki, Shinagawa-ku, Tokyo  
**Capital:** 30,872 million yen  
**Number of Employees:** 25,303 (consolidated)  
\*As of December 31, 2023  
**Net Sales:** 1,081.5 billion yen (consolidated)  
\*Results for FY2023  
**Website:** <https://www.shi.co.jp/english/>

## PTC Group

**Headquarters:** PTC Group, Mechatronics Segment, Sumitomo Heavy Industries, Ltd.  
**Organization:** Expanding a global network for manufacturing and sales in countries and regions around the world  
**Number of Employees:** 7,752 (consolidated across PTC Group)  
\*As of December 31, 2023  
**Website:** <https://www.sumitomodrive.com>

## Global Network

### Japan

Sumitomo Heavy Industries, Ltd.  
Sumitomo Heavy Industries Gearbox Co., Ltd.

### Asia Pacific

**China**  
Sumitomo (SHI) Cyclo Drive Shanghai, Ltd.  
Sumitomo (SHI) Cyclo Drive China, Ltd.  
Sumitomo Heavy Industries (Tangshan), Ltd.  
Invertek Drives (Shenyang) Ltd.  
Lafert (Suzhou) Co.,Ltd.

**Hong Kong**  
SM-Cyclo of Hong Kong, Ltd.

**Taiwan**  
Tatung SM-CYCLO Co., Ltd.

**South Korea**  
Sumitomo (SHI) Cyclo Drive Korea, Ltd.

**India**  
Sumi-Cyclo Drive India Private Limited

**Singapore**  
Sumitomo (SHI) Cyclo Drive Asia Pacific Pte. Ltd.  
Invertek Drives Far East Pte Ltd.  
Lafert Singapore Pte Ltd.

**Philippines**  
Sumitomo (SHI) Cyclo Drive Asia Pacific Pte. Ltd. (Philippines Branch Office)

**Vietnam**  
SM-Cyclo (Vietnam) Co., Ltd  
Sumitomo Heavy Industries (Vietnam) Co., Ltd.

**Indonesia**  
PT. SM Cyclo Indonesia

**Malaysia**  
SM-Cyclo (Malaysia) Sdn. Bhd.

**Thailand**  
SM-Cyclo (Thailand) Co., Ltd.

**Australia**  
Sumitomo (SHI) Hansen Australia Pty. Ltd.

**Americas**

**U.S.A**  
Sumitomo Machinery Corporation of America  
Invertek Drives USA LLC

**Canada**  
SM Cyclo of Canada, Ltd.  
Lafert North America Inc.

**Mexico**  
SM Cyclo de México, S.A. de C.V.

**Guatemala**  
SM Cyclo de Guatemala Ensambladora, Ltda.

**Colombia**  
SM Cyclo Colombia, S.A.S.

**Peru**  
SM Cyclo de Perú, S.A.C.

**Chile**  
SM-Cyclo de Chile Ltda.

**Brazil**  
Sumitomo Indústrias Pesadas do Brasil Ltda.

**Argentina**  
SM-Cyclo de Argentina S.A.

**Europe, Middle East & Africa**

**Germany**  
Sumitomo (SHI) Cyclo Drive Germany GmbH  
Invertek Drives GmbH  
Lafert GmbH

**Poland**  
Invertek Drives Polska Sp. z o.o.

**Slovenia**  
Lafert Elektromotorji D.o.o.

**Austria**  
Sumitomo(SHI) Cyclo Drive Germany GmbH (SCG) (Austria Branch Office)

**Belgium**  
Hansen Industrial Transmissions NV

**France**  
SM-Cyclo France SAS  
Lafert Moteurs S.A.S.

**Italy**  
SM-Cyclo Italy Srl  
Lafert S.p.A.

**Spain**  
Sociedad Industrial de Transmisiones, S.A.  
Invertek Drives Iberica S.L.U.  
Lafert Motores Electricos, S.L.U.

**United Kingdom**  
SM-Cyclo UK Ltd.  
Invertek Drives Ltd.  
Lafert Electric Motors Ltd.

**Turkey**  
SM-Cyclo Turkey Güç Aktarım Sis. Tic. Ltd. Sti.

## PTC Group Global Brand Sumitomo DriveTechnologies

### Brand Statement

We are always moving forward in pursuit of new ideas that inspire our partners to create new values that will change the world.

Each of our skilled, knowledgeable, creative employees contributes to the creation of unique technologies and innovative solutions that meet and exceed our partners' expectations. Our global network facilitates premier support of our partners' needs.

We stand poised to meet the challenges of today and tomorrow, so that our partners may walk with confidence as industry leaders.

**Sumitomo Drive Technologies:** A dependable partner, creating unprecedented change and opening up unseen worlds. That is who we are.